

PRODUCT: RST301 Transmission Pan Gasket Fitting Tool

Servicing Tip: Fitting Pan Gaskets



Remove the frustration of aligning the transmission gasket to the pan with the new RST301 fitting tool.

The RST301 fitting tool includes 4x 6mm pins, 4x 8mm pins and a comprehensible instruction sheet.

The pins can be easily fitted and help align the pan gasket to the transmission case avoiding unnecessary frustration trying to fit it the traditional way.

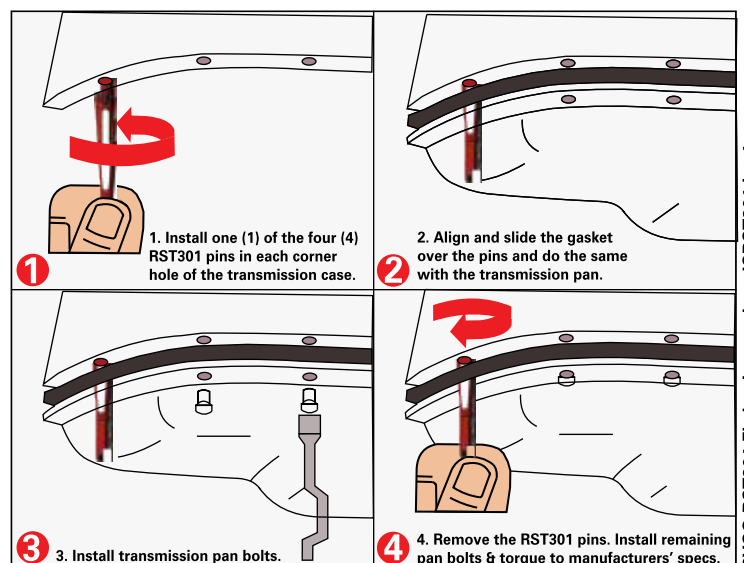
The extra hand that you so often looked for in order to fit a pan gasket is now here!



*Illustrational image only

Simply screw 4 suitable pins, 1 in each corner of the pan, once this is done, the pan is aligned and ready for you to drive the screws in saving time & money!

RST301
Get the job done faster
with less frustration!



RYCO RST301 Fitting Instructions ISRST301 Iss 1

